

HOW TO CHANGE DISC VALVES

- 5HP INLINE APP2I0524T/P
- 7.5/10HP V4
APP4V1043T/P/R1/R2



POP OFF VALVE GOING OFF

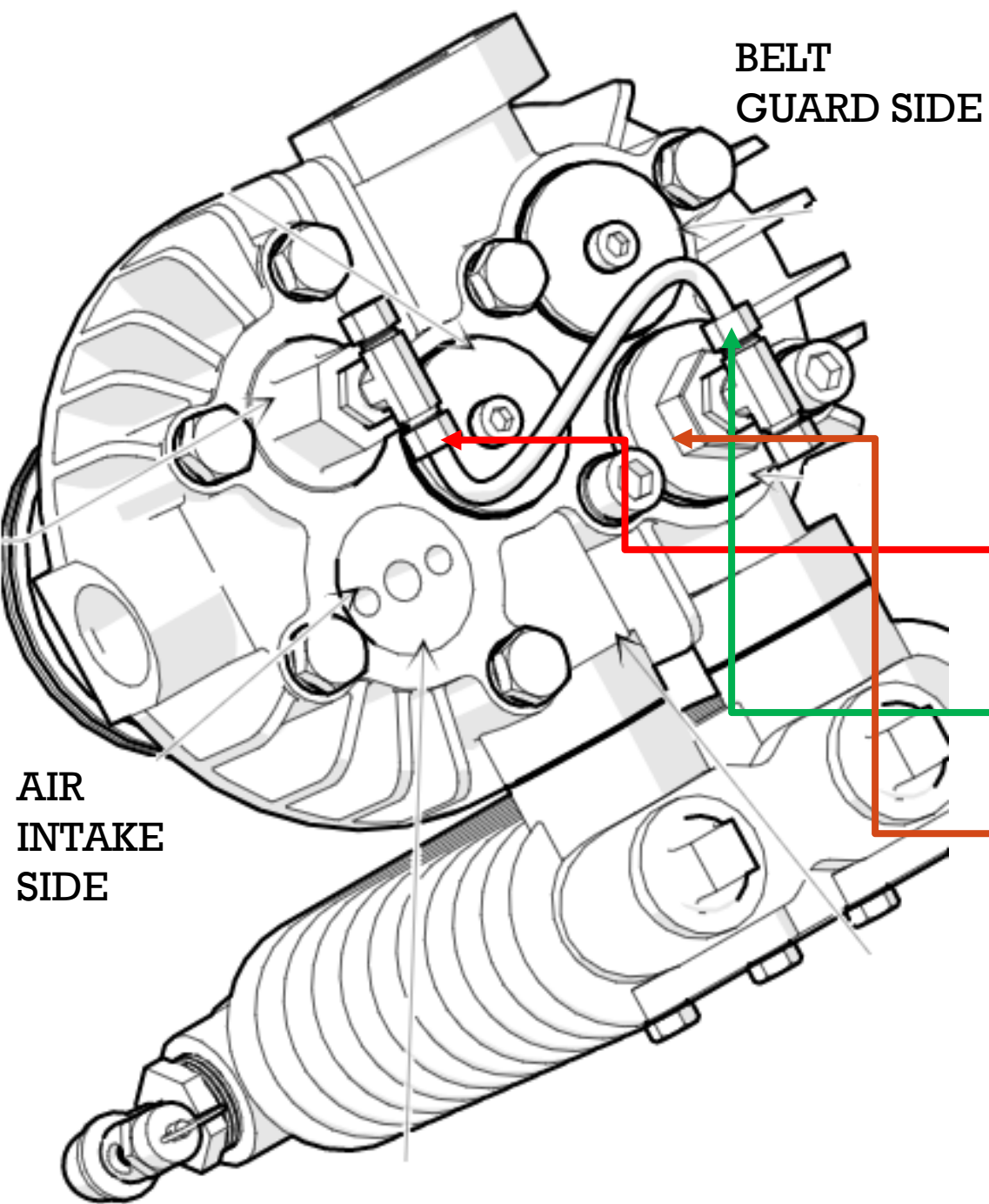
- Interstage pop off valve located on your compressor will go off if there is a valve malfunction.
- This can be from debris, an actual malfunction, gasket wear, or in the case of an actual pop off valve that has become weak over time.
- Disc valves are easy to change and can be done with 15-20 minutes as they are drop in and do NOT require you to remove the head.



TOOLS REQUIRED

- ½" Ratchet
- Needle nose pliers
- Flat head screwdriver
- Hammer
- VALVEKIT from Eaton Compressor
- Adjustable wrench
- Lithium grease or bearing grease





BELT
GUARD SIDE

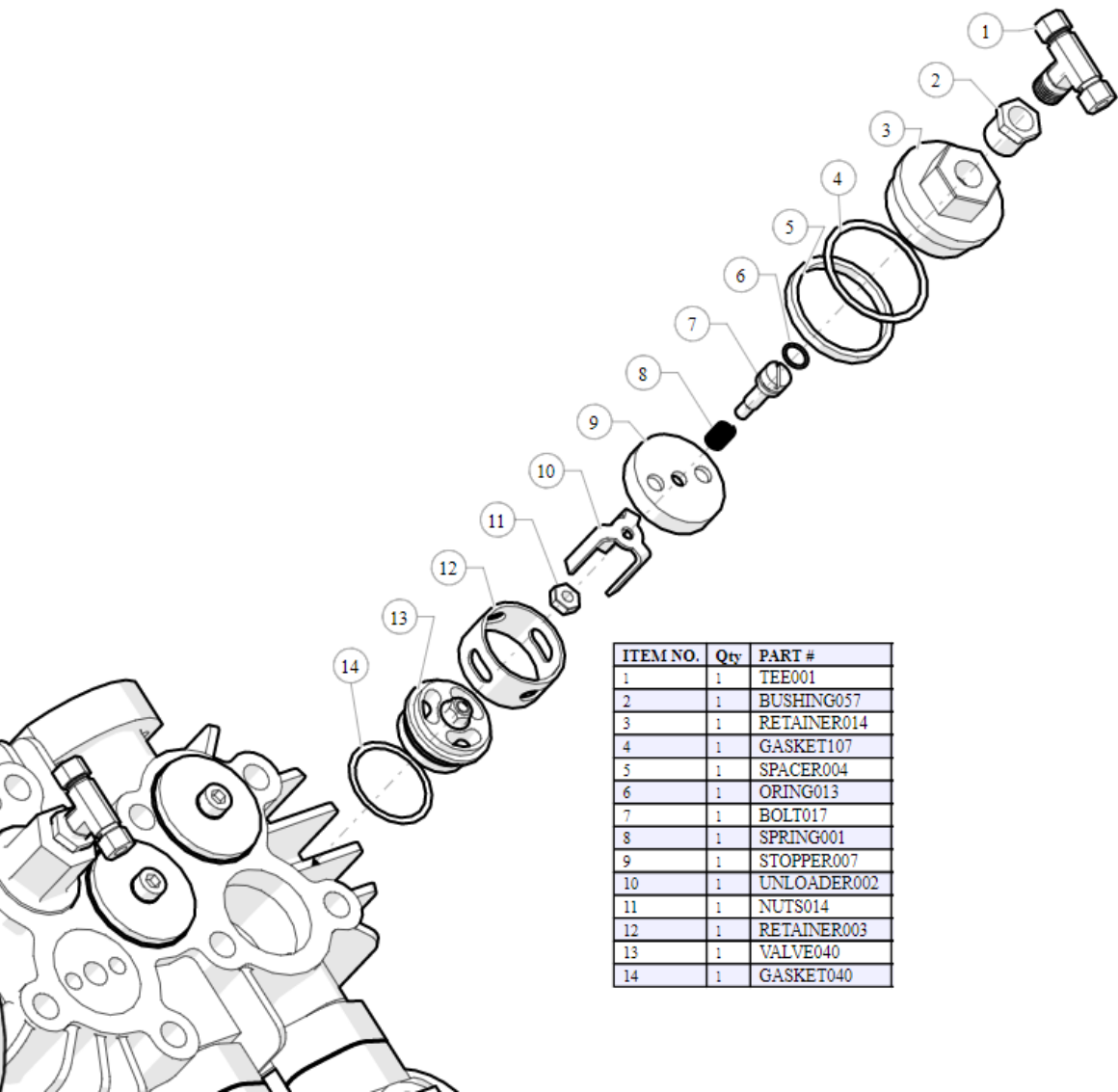
STEP 1

(RIGHT HEAD ON V4, FACING THE PUMP)

- Loosen $\frac{1}{4}$ " copper line from front connection
- Remove the line from the "T" fitting on the rear left valve and flip the line to the front.
- Loosen and remove the head cover from the large hex nut here.

AIR
INTAKE
SIDE



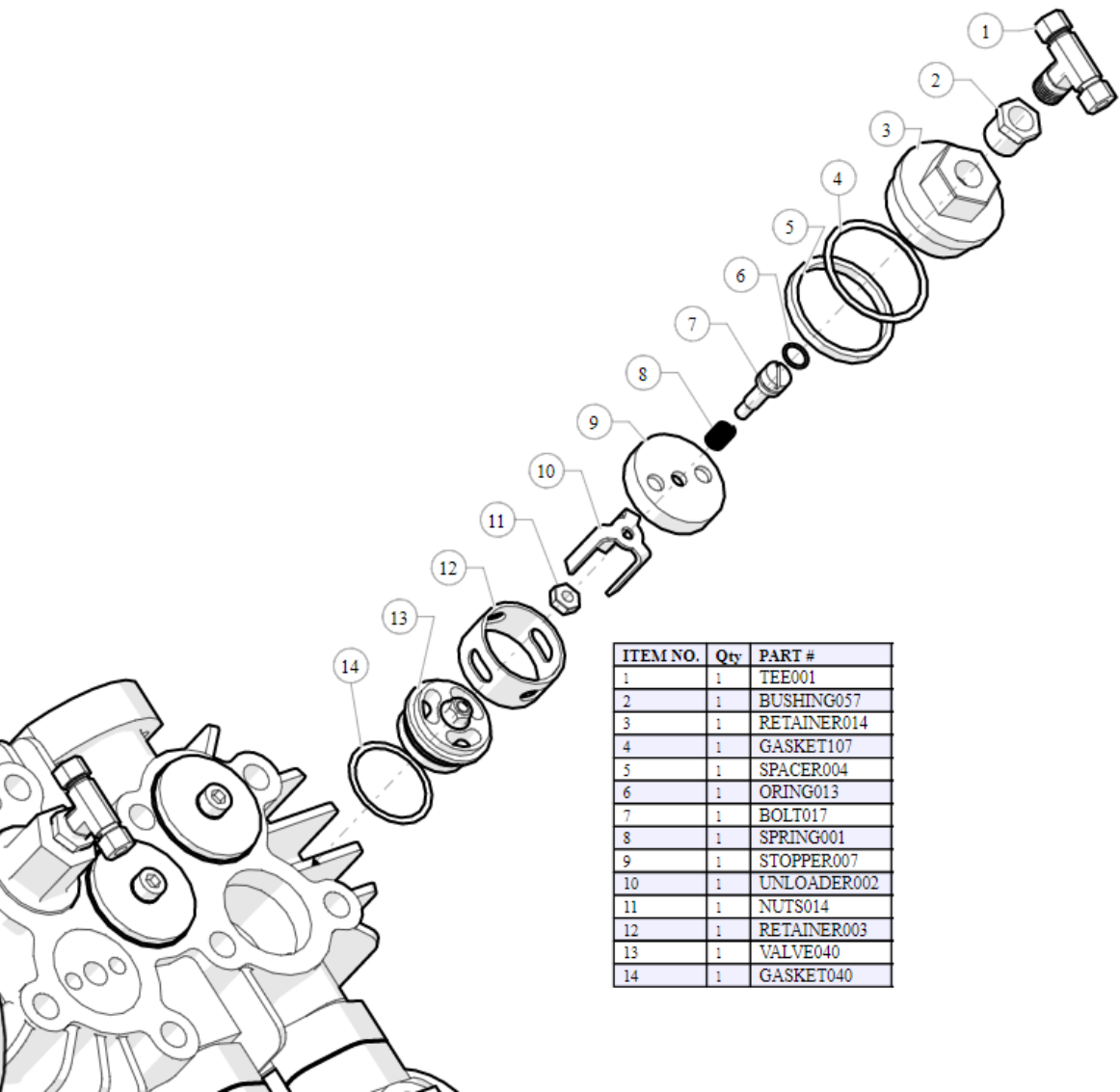


ITEM NO.	Qty	PART #
1	1	TEE001
2	1	BUSHING057
3	1	RETAINER014
4	1	GASKET107
5	1	SPACER004
6	1	ORING013
7	1	BOLT017
8	1	SPRING001
9	1	STOPPER007
10	1	UNLOADER002
11	1	NUTS014
12	1	RETAINER003
13	1	VALVE040
14	1	GASKET040

STEP 2, PULLING THE HIGH PRESSURE INTAKE VALVE

- Parts 1-5 should come off together and do not need further disassembly
- Using the ½" ratchet and the supplied spanner tool from your VALVEKIT remove the valve cover. Place the spanner over top of part 7, and lock it into the holes in part 9 and turn it counter clockwise to loosen.
- You may have to use WD-40 or a penetrating fluid to release the valve cover from the head.

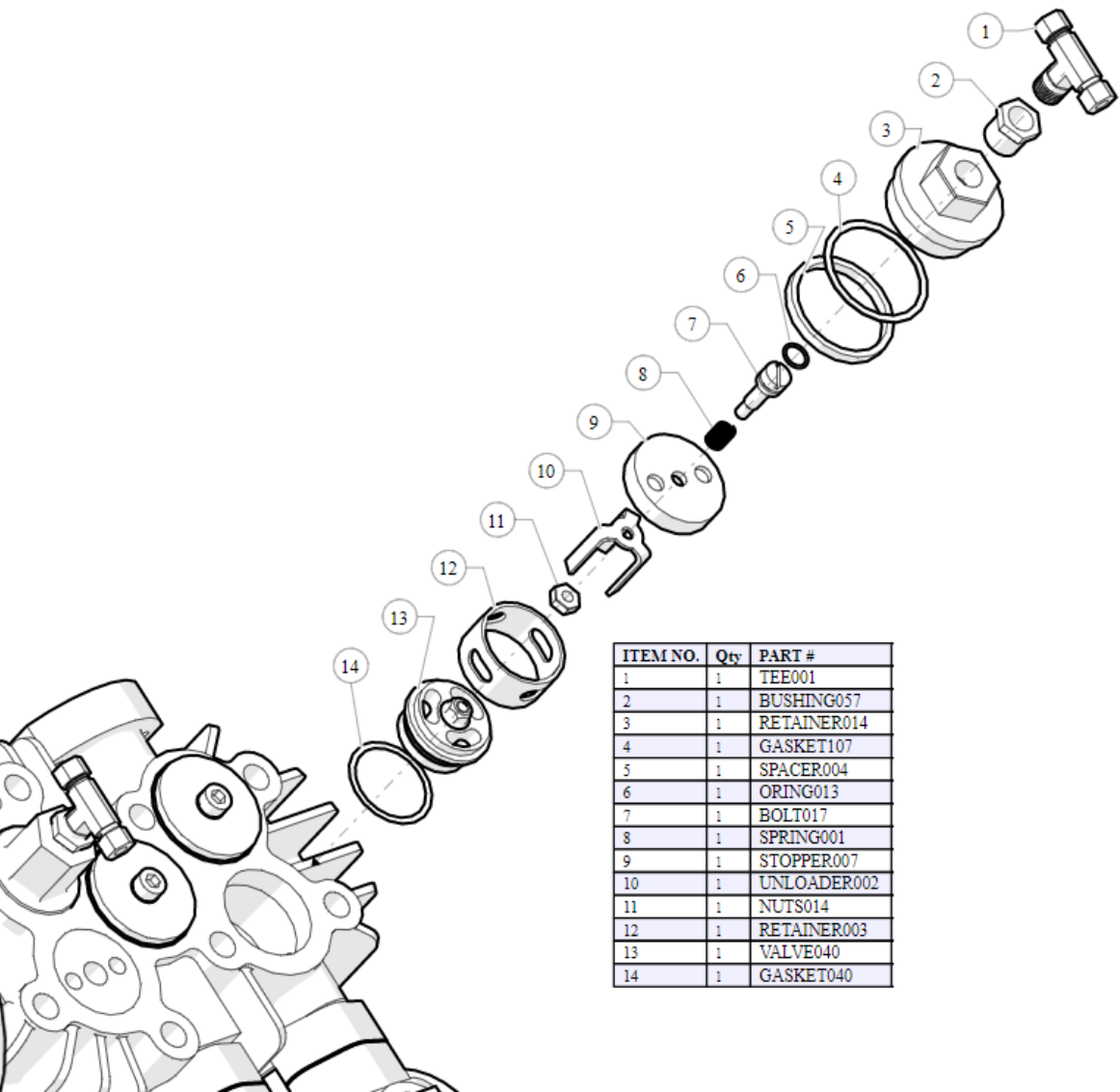




STEP 3, PULLING THE HIGH-PRESSURE INTAKE VALVE

- Once the valve cover is out, parts 6-11 set it aside.
- Reach in with the pliers and remove part 12. it should lift out with no issue.
- Using the needle nose pliers remove the actual valve, part 13. Part 14 may be attached to the valve so take care.
- Remove and replace part 14.





ITEM NO.	Qty	PART #
1	1	TEE001
2	1	BUSHING057
3	1	RETAINER014
4	1	GASKET107
5	1	SPACER004
6	1	ORING013
7	1	BOLT017
8	1	SPRING001
9	1	STOPPER007
10	1	UNLOADER002
11	1	NUTS014
12	1	RETAINER003
13	1	VALVE040
14	1	GASKET040

STEP 4, PLACING THE HIGH-PRESSURE INTAKE VALVE

- The new part 13 **MUST** go in with the 3 kidney bean shaped windows facing up.
- Reinstall part 12
- Reinstall the forked valve cover assembly (part 6-11) see next page before install.



STEP 4 CONT. VALVE FORK PLACEMENT

- Install the stopper one or two threads with the three forks pointing downwards.
- Slowly turn the stopper while depressing BOLT017 to ensure that the forks are seated into the three cut outs in the valve itself.
- Once you have the valve a few turns in use WRENCH002 (spanner wrench socket) to tighten the valve to snug, it is not necessary to crank down on the stopper.
- Ensure BOLT017 moved freely and springs back.
- Inspect ORING013 on top of BOLT017 to make sure it is intact and not torn and apply a small amount of grease to the sides around the o-ring.
- Reinstall parts 1-5 making sure to tighten to snug, and to tighten via the large cast hex cover and not the brass parts on top of the assembly.

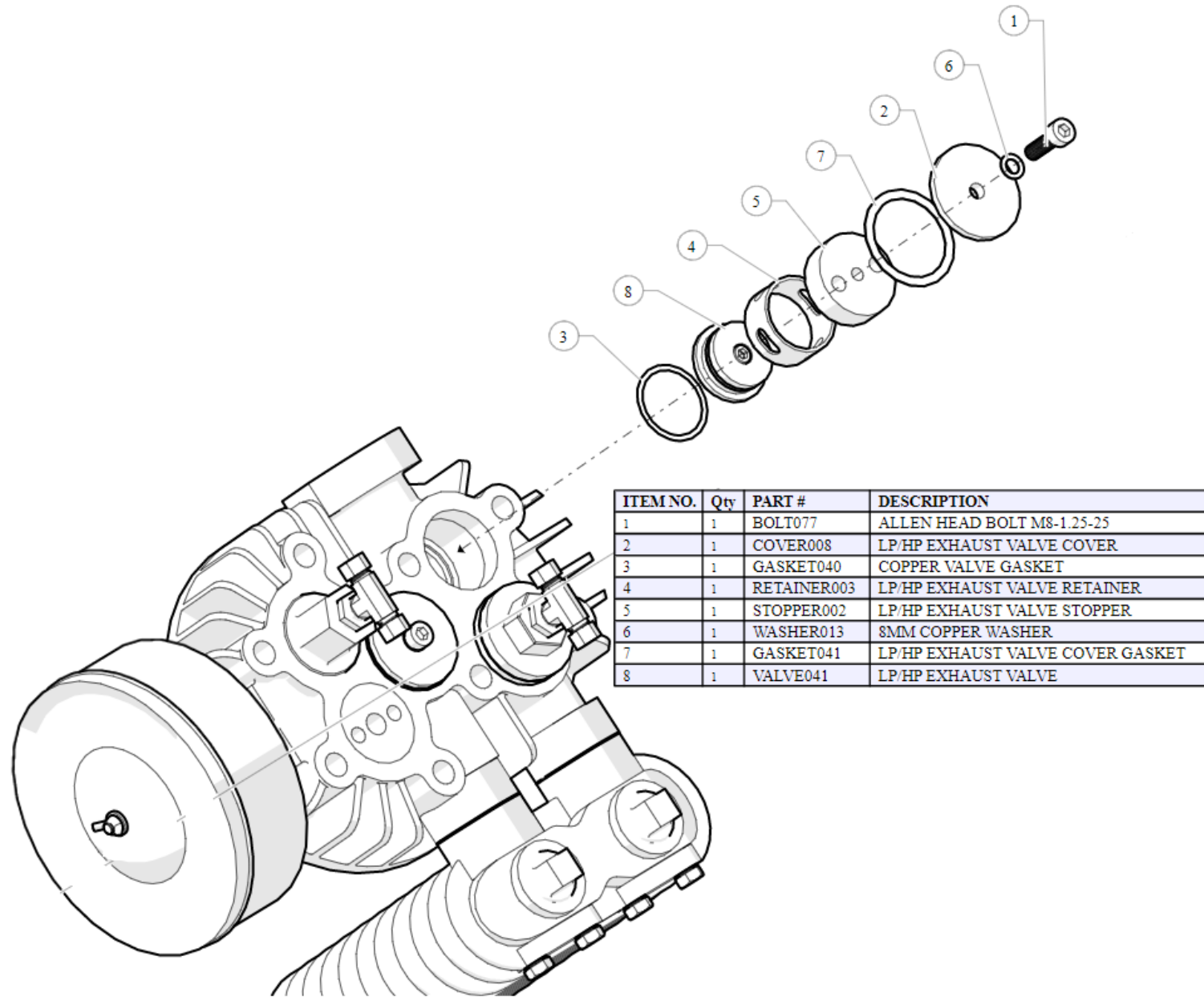


STEP 5, HIGH PRESSURE EXHAUST VALVE

Begin by removing
BOLT077 and WASHER013
from the assembly.

Using a flat head
screwdriver and a
hammer, lightly tap on the
edge of COVER008.

Once the cover is off you
will have to clean off
GASKET041 as it will be
damaged upon removal.



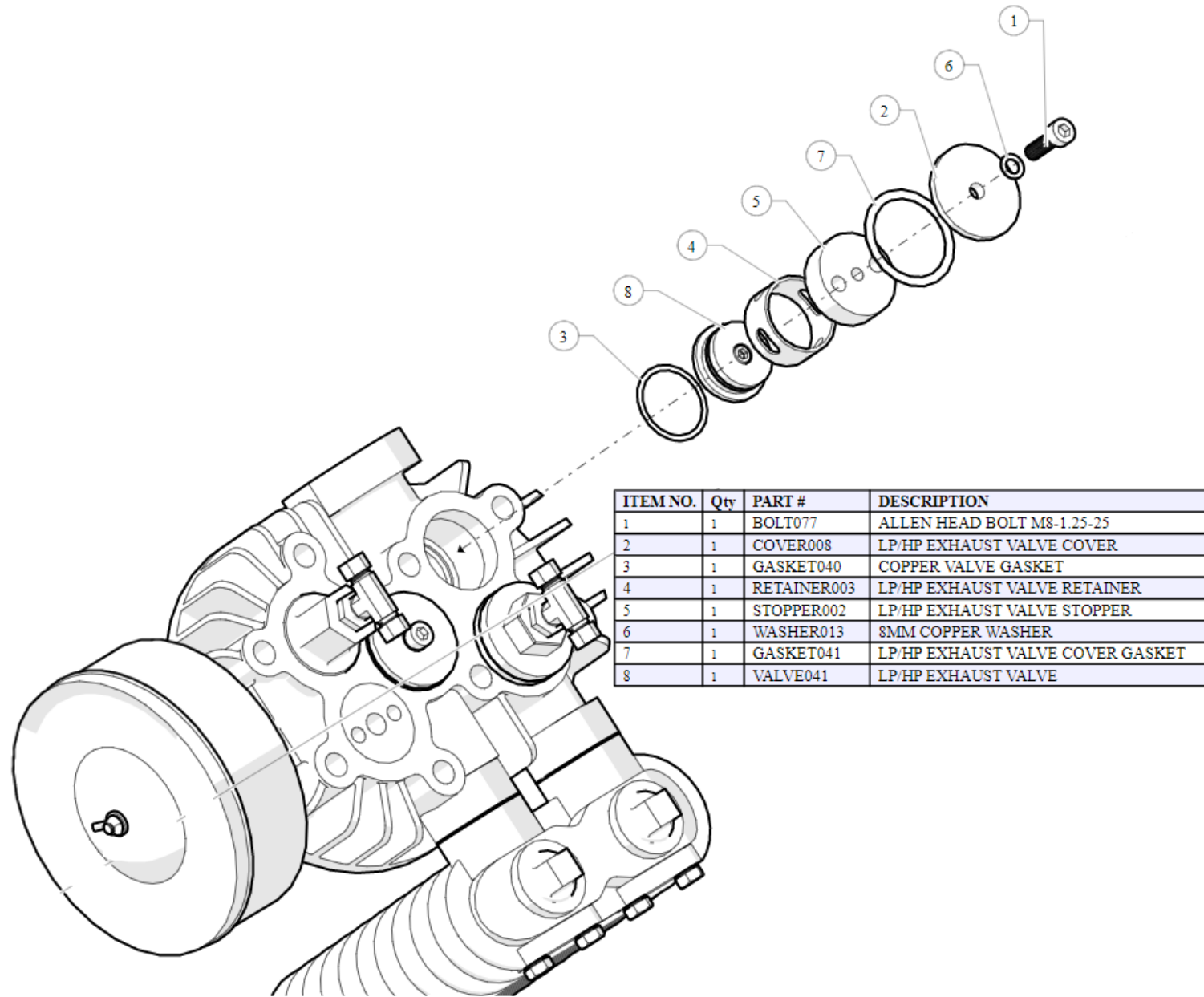
STEP 6, HIGH PRESSURE VALVE CONT.

Using WRENCH002
remove STOPPER002 from
the assembly

Next remove
RETAINER003

You can now remove the
valve and set aside.

Pull and remove
GASKET040,
This may be broken or in
pieces; clean this out the
best you can as it will not
damage the unit if some
falls in.



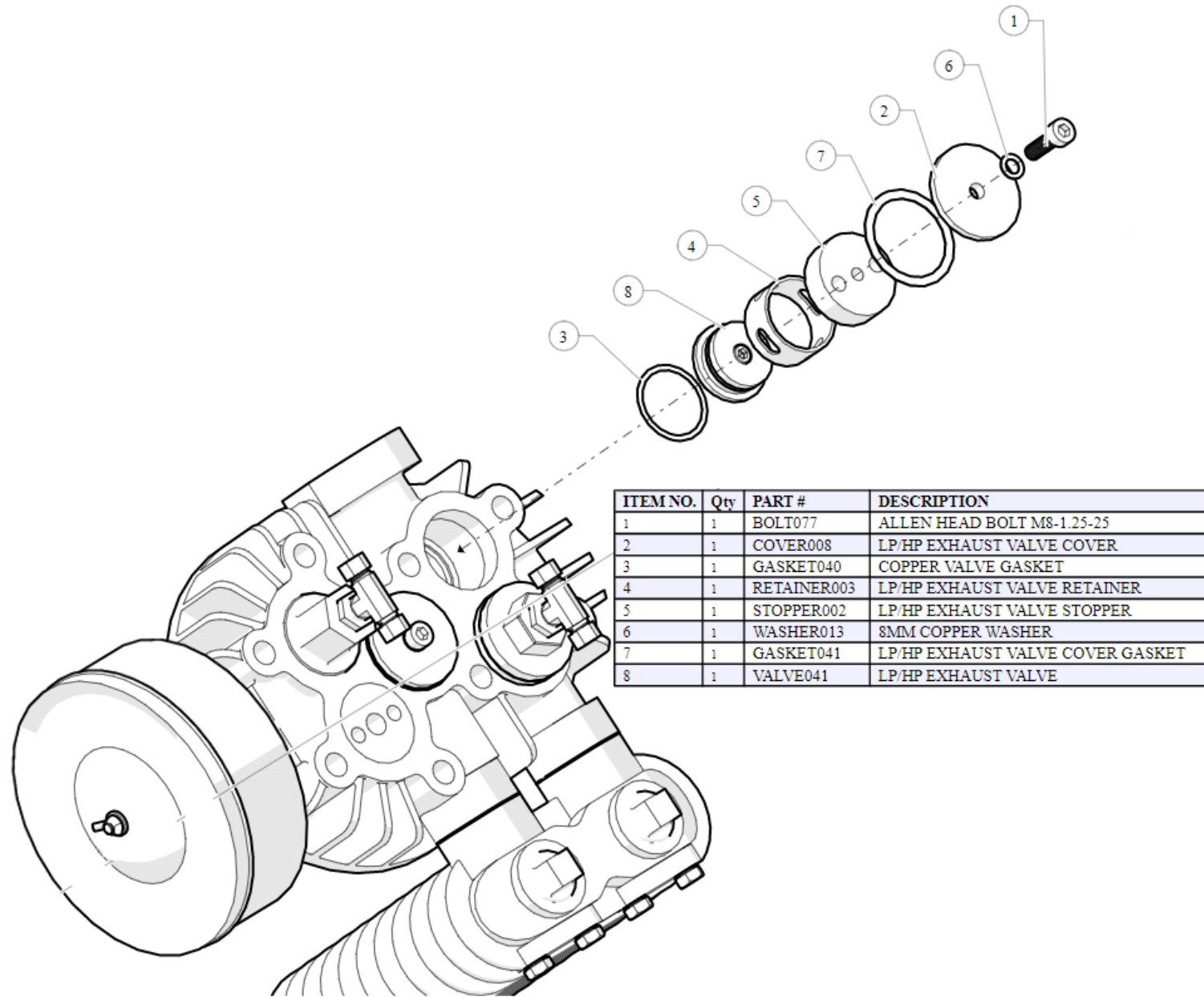
STEP 6, HIGH PRESSURE VALVE CONT.

Replace GASKET040

Install the new valve.

For this side, the three cut
outs on the valve face
should be facing DOWN,
into the piston.

Reinstall the retainer and
the stopper making sure
to go to snug and not to
apply excess pressure.



STEP 7

- Make sure all the paper gasket is cleaned off and replace with the new GASKET041 that came in your kit.
- Reinstall parts 1 and 6.
- BOLT077 should be torqued to 28ft-lbs
- If a torque wrench is not available, take it to snug and then attempt to turn the bolt an additional 1/8 of a turn.
- Reattach the 1/4 line between the heads at the compression nuts.

